

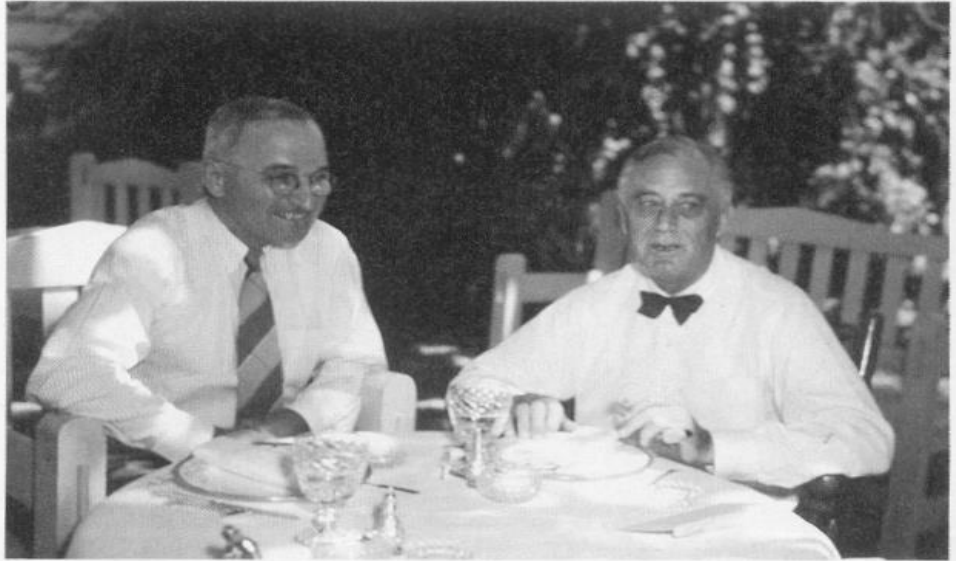
Beloved FDR dies; Truman steps in

Warm Springs, Georgia, Apr. 12

A shocked nation is in mourning tonight for Franklin Delano Roosevelt. The President died this afternoon at the "Little White House" in this small Georgia town. Vice President Harry S. Truman was on Capitol Hill when the President died. He was rushed to the White House, where he offered his condolences to Mrs. Roosevelt before he was sworn in as the 32nd President of the United States.

Doctors say Roosevelt passed away at 3:35 p.m., two hours after he suffered a cerebral hemorrhage. Grace Tully, his private secretary, said, "The shock was unexpected and the actuality of the event was outside belief." In recent days, Roosevelt appeared to be recuperating from the stresses of war and the Yalta Conference. His pulse was normal when Commander Howard Bruenn examined him this morning. In the afternoon, Roosevelt was sitting for a portrait by Elizabeth Shoumatoff, who had been introduced by his long-time friend, Lucy Mercer Rutherford. She was with Roosevelt when he slumped in his chair.

After Mrs. Roosevelt was informed of her husband's death, she said, "I am more sorry for the people of this country and of the world than I am for ourselves." When Truman asked the First Lady what he could do for her, she replied, "Is there anything we can do for you? You are the one in trouble now."



An ailing President Roosevelt with his successor, Vice President Harry Truman.



The President's casket makes its way toward Union Station and the trip home.

1. What does the headline tell us about Roosevelt?
2. Why was FDR's death more "emotional" than the death of other Presidents?
3. How did Roosevelt die?
4. Why do you think Mrs. Roosevelt asked Truman, "Is there anything we can do for you? You are the one in trouble now."
5. Truman responded by saying "When they told me yesterday what had happened, I felt like the moon, the stars, and all the planets had fallen on me. I've got the most terribly responsible job a man ever had."
 - a. What emotions is Truman showing in this quote?